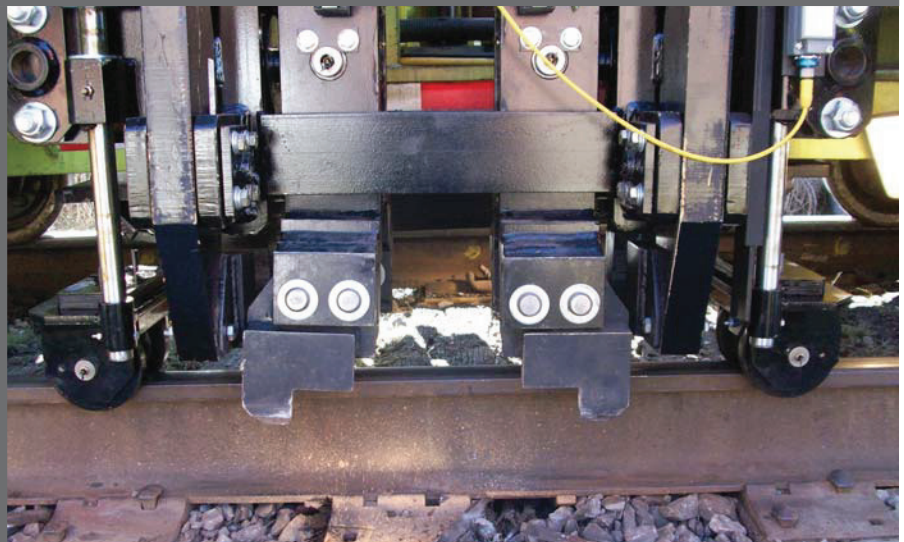


## AA2R - Anchor Adjuster Two Rail



**RELAM**  
RAILWAY EQUIPMENT LEASING AND MAINTENANCE

RELAMINC.COM

RELAM, Inc.  
7695 Bond Street  
Glenwillow, Ohio 44139  
800.962.2902  
quotes@relaminc.com

**WISKERCHEN**  
TRUCK & EQUIPMENT LLC

WISKTRUCKS.COM

Wiskerchen Truck & Equipment  
205331 Co Rd F  
Spencer, WI 54479  
888.405.0110  
info@wisktrucks.com

## Key Features

The AA2R - Anchor Adjuster Two Rail includes the following key features:

- Enclosed single-operator (with space for two additional passengers), climate-controlled cab; optional extended cab (total capacity = 8) available
- Combination spreader/squeezer assembly over each rail
- Adjustable workhead height for tie-to-tie indexing
- Cab-controlled workhead power lock-ups
- Integrated guide rollers and rail clamps for increased stability
- John Deere, 4.5 liter, Tier III 99 HP diesel engine; optional Cummins, 4.5 liter, Tier III 100 HP engine available
- Four-wheel, dual-axle, chain-driven propulsion system
- 24 VDC, circuit breaker-protected, electrical system
- Spring-applied, hydraulic-released brakes, with Cobra brake shoes
- Integrated, positive locking, rail-to-rail turntable
- Back-up alarm, switchable for travel direction

*Switch between spreading and squeezing functions with simple tool swaps!*



## Two anchor operations - one machine

No need to buy both an anchor spreader and an anchor squeezer for your tie gang. Simply swap the workhead tools, in the field or shop, to switch between spreading and squeezing functions.

## Use fewer personnel carriers

The optional extended cab allows up to seven extra crew members (total capacity = 8) to ride in the cab. Fewer personnel carriers mean less equipment to maintain and less space needed on sidings for overnight storage.

## Work with or without ties in place

Simply change a workhead tool to switch between tie mode and no-tie mode.

## Quickly adjust to different working conditions

Quickly add or remove shims to set the workhead to handle different rail heights. In addition, an integrated turntable allows the AA2R to easily reverse direction on the track.

## Minimize manual intervention

Since the AA2R also loosens and pushes the tie plates during the adjusting function, your crew will need to perform less manual labor to remove embedded plates from badly degraded ties.

## Select between automatic or manual modes

Use the auto cycle mode to automatically spread anchors at a pre-determined height or, when necessary, easily switch to manual mode to precisely lower the workhead to the desired height for the situation.

## Lower cost of ownership

Since you only need one anchor-related machine, you save on initial acquisition costs, maintenance costs, and even storage costs - lowering your overall total cost of ownership.

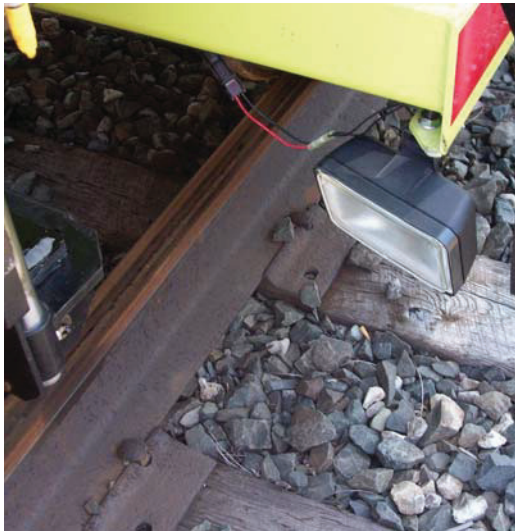
In addition, the AA2R uses many of the same components as other Nordco machines, so you can stock fewer maintenance parts on your parts wagon.

Numerous windows provide clear visibility of the work area. Easily accessible control panel allows the operator to quickly reach needed controls.





Ergonomic operator seating keeps operators comfortable and productive through long shifts. Extended cab option allows seating for up to eight people.



4x6 LED work lights over each rail clearly illuminate the work area, allowing increased precision during anchor adjustments.

## Ask us about...

### Rebuild Programs

Are your maintenance-of-way machines getting older and less reliable? Nordco can rebuild virtually all maintenance-of-way equipment, regardless of original manufacturer, restoring your machines to like-new status.

### Component Exchange Programs

Do you only need a replacement component, such as a workhead or axle, for your maintenance-of-way machine? You can order new or rebuilt components to be delivered directly to your shop or field operations.

### Trade-In Programs

Interested in purchasing a new maintenance-of-way machine, but wondering what to do with your existing equipment? In many cases, you can trade in your current equipment for credit towards a new machine.

### Rental Programs

Have a short-term need for a particular maintenance-of-way machine? Check our website for a current list of available rental equipment.

### Parts Availability

Need parts for your maintenance-of-way machine? Contact our part experts at 1-800-647-1724, Monday through Friday, 7:30 a.m. to 5:00 p.m. US Central Time.

Want to ensure that you order the most essential parts to keep your maintenance-of-way machine operational? Check our website or ask your parts sales representative about the available critical component kits and basic spare part kits for your machine.

Not sure what parts to order for preventive maintenance or winterization? You'll find a large range of kits available - check our website or ask your parts sales representative.

## Optional Equipment

Category	Option Type	Description
<b>Cab</b>	Extended cab	Provides total seating capacity for up to eight crew members.
	Cab accessories	Cab pressurizer, cab window shades (standard cab and extended cab)
<b>Repair &amp; Maintenance</b>	Corner-mounted jackstands	Lifts the unit to allow under-machine repairs
	Electric hydraulic tank fill system	Allows quick filling of hydraulic tank
	Spare hose tree	Stores extra hoses on the machine
	Remote coolant filter loops / Remote fluid drains	Allows quick filter/fluid maintenance
	Schroeder KF 30 case drain return filtration	Filters oil to remove engine wear-related metal filings
	Electric emergency pump	Allows workhead to be moved if engine fails
<b>Cold-Weather</b>	Machine heaters	110-volt engine and oil pan heater, hydraulic warm-up valves, winter operation Espar heater for engine and hydraulic tank
	Cab heater	Espar heater for cab
<b>Other Accessories</b>	Gauges and alarms	Fuel level site gauge, speedometer, hydraulic reservoir temperature gauge, low hydraulic oil/high hydraulic oil temperature alarm, turntable warning light and buzzer
	Lighting and mirrors	Heated outside mirrors and perimeter lighting package
	Storage	Additional book storage box, operator belongings box, track tool box
	Miscellaneous	"Danger Live Track" retractable belt, DOT reflective tape, extra parts/operations/maintenance manuals, rail sweeps, tow bar with D-handle hitch pins, windshield washer fluid tank and nozzles

## Product Specifications

Category	Specification	Value
<b>General</b>	Weight	19,600 lbs
	Length	20' 6"
	Width	Highway travel: 8' 6"; Working: 9' 8"
	Height	Highway travel: 10' 6"; Working: 10' 8"
	Wheel base	84"
	Travel speed	25 mph (maximum)
<b>Capacities</b>	Fuel tank	60 gallons
	Hydraulic tank	98 gallons
<b>Engine</b>	Make/Model	John Deere 4045T
	Type	Turbocharged, inline four-cylinder
<b>Hydraulic System</b>	Make/Model	Vicker PVM098 (24 Volt)
	Type	Pressure-compensated, variable displacement piston pump
<b>Electrical System</b>	Battery	24 Vdc (dual 12V DC batteries), 1150 cold-cranking amps
<b>Axle Drive System</b>	Drive type	Dual-axle chain drive
	Propulsion type	Hydraulic
<b>Brakes</b>	Type	Spring-applied/hydraulically released
	Style	Four-wheel Cobra-style