



**RACINE  
RAILROAD  
PRODUCTS**

# Tie Plate Inserter

INNOVATIVE DESIGN FROM RACINE RAILROAD PRODUCTS

## One Operator

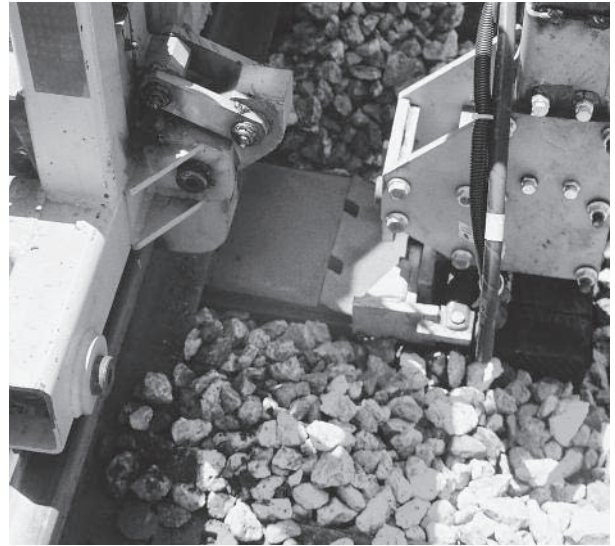
This self-propelled machine increases productivity, efficiency and safety while helping reduce labor costs.

## Maneuverability

Tie plates can be maneuvered fore & aft, left & right and up & down. Hard stops ensure proper placement of plates before the rail is lowered. Each rail jack and workhead is independently controlled with a multi-function joystick. Workhead lighting is standard for night and tunnel projects.

## Spacious Cab Design

Excellent 360-degree view at operator eye level. Cab forward design for easy view-ability of the work area with minimal head turning. Operators seat is adjustable and belt equipped. All controls are ergonomically situated and within easy reach.



**RELAM**  
RAILWAY EQUIPMENT LEASING AND MAINTENANCE

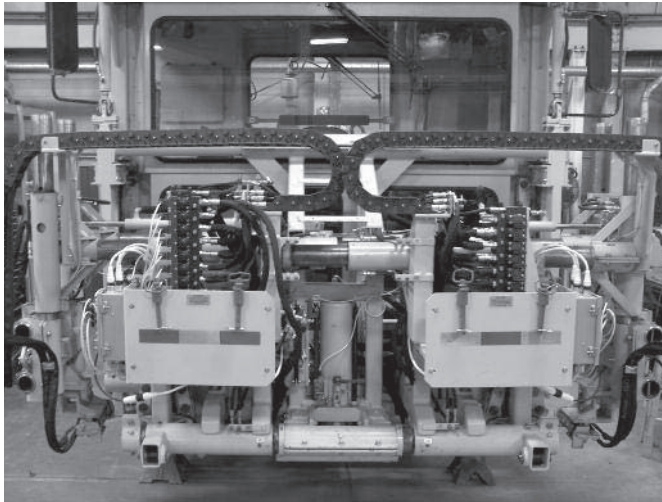
RELAMINC.COM

RELAM, Inc.  
7695 Bond Street  
Glenwillow, Ohio 44139  
800.962.2902  
quotes@relaminc.com

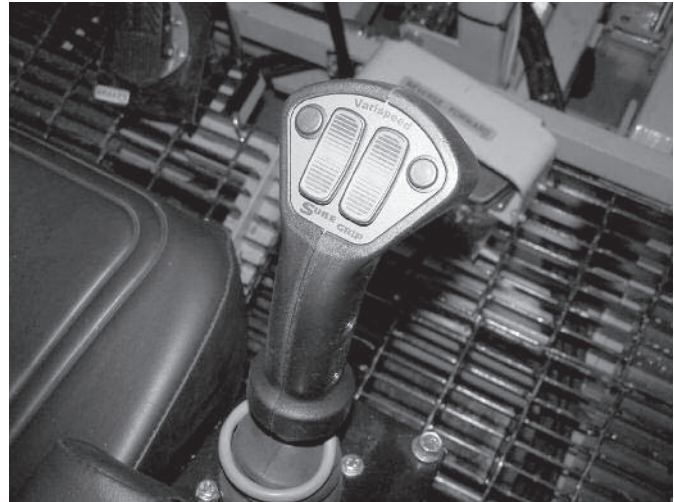
**WISKERCHEN**  
TRUCK & EQUIPMENT LLC

WISKTRUCKS.COM

Wiskerchen Truck & Equipment  
205331 Co Rd F  
Spencer, WI 54479  
888.405.0110  
info@wisktrucks.com



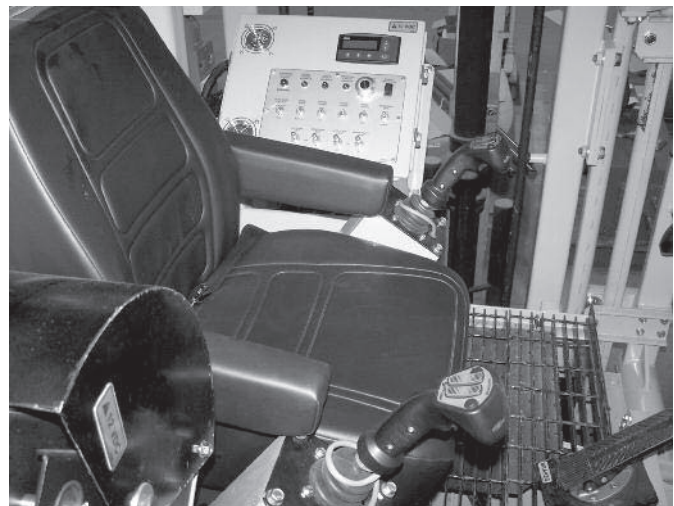
**Workhead closeup**



**Multi-function joystick control**

## **PRODUCT SPECIFICATIONS:**

- Hatz 3L41C air-cooled diesel
- Structural steel frame with derail skirts and key hole tie downs
- Insulated 2.44 inch diameter axles
- Axle mounted split roller chain sprockets
- 12 VDC system voltage
- 30 gallon capacity hydraulic reservoir with removable clean out covers, top and bottom access covers and temperature gauge.
- 18 gallon capacity fuel tank
- Dimensions: L-200" W-102" H-112"  
Weight: 13,400 lbs



**Spacious operator's cab**