



# Safelok® Applicator / Remover

INNOVATIVE DESIGNS FROM RACINE RAILROAD PRODUCTS



## RRP Design

The Safelok Applicator / Remover is a dual workhead production / maintenance machine with the capability of applying and retracting the Pandrol®, Safelok I®, Safelok III®, Shur-Lok®, and Air Boss® type clips.

The unique retraction tool feature uses a scissors-type squeeze mechanism to release the clip from the socket, retract the clip and precisely position the clip at the end of the socket in preparation for re-installation.

This exclusive feature prevents clips from being lost and reduces risk of injury from “flying clips”.

## Innovative Technology

- Programmable MD4 controlled automation has faster & smoother cycle times than previous RRP machines.
- Onboard electrical system diagnostics that simplify troubleshooting and lessen downtime.
- Remote program updates and remote troubleshooting with built-in telematics available.

## Easy Set-up and Operation

- Easy touchscreen controls for workhead adjustments are made inside the cab from the operator seat, saving time while keeping the operator in a safe environment.
- Auto and Manual operation modes.
- Reliable workhead design provides years of trouble-free service.

## Versatile

- In-cab adjustments align the workhead to accommodate rail height.
- Change out the Safelok workhead with the Fast Clip workhead for added cost effective production capabilities.
- A single operator can simultaneously apply 2 or 4 clips.

**RELAM**  
RAILWAY EQUIPMENT LEASING AND MAINTENANCE

RELAMINC.COM

RELAM, Inc.  
7695 Bond Street  
Glenwillow, Ohio 44139  
800.962.2902  
quotes@relaminc.com

**WISKERCHEN**  
TRUCK & EQUIPMENT LLC

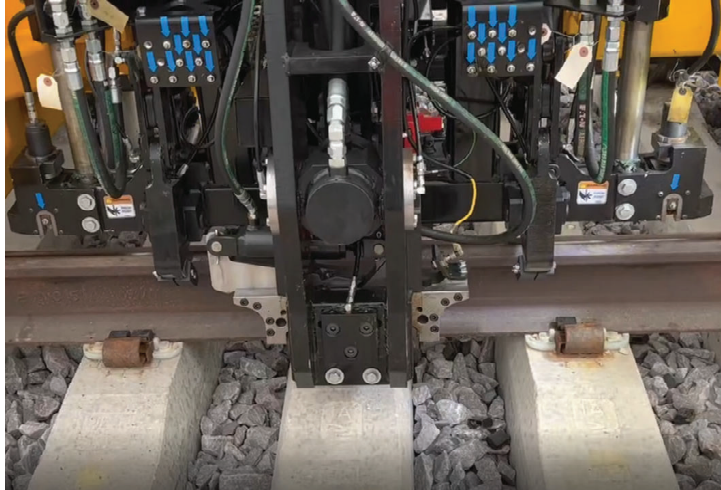
WISKTRUCKS.COM

Wiskerchen Truck & Equipment  
205331 Co Rd F  
Spencer, WI 54479  
888.405.0110  
info@wisktrucks.com



# Safelok® Applicator / Remover

INNOVATIVE DESIGNS FROM RACINE RAILROAD PRODUCTS

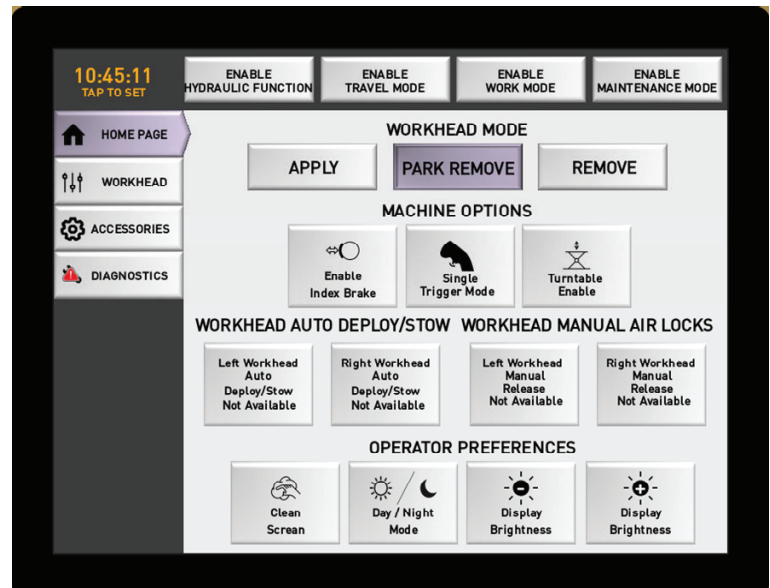


## Specifications

- Dimensions: 24'7" L x 8'5" W x 10' H
- Weight: 19,00 lbs
- Travel Speed: 25 MPH
- Engine: We offer a variety of engine packages to choose from, No DEF
- Fuel Capacity: 50 Gallons
- Hydraulic Reservoir: 58 Gallons (Case Drain Filter, Pressure Filter, & Return Filter options available)
- 24 volt system with circuit breakers for lights & accessories
- Seating Capacity: 1 operator & two passengers

## Features

- Excellent visibility of the work zone, increasing productivity and reducing wear on machine travel components.
- Machine has un-obstructed operator visibility fore and aft when track traveling.
- Cab: Enclosed Heat & A/C, full ergonomic seat with joystick controls, tinted safety glass for operator comfort.
- Various HVAC options to choose from.
- Multiple storage options for tools & equipment
- Two joystick controls to control each side of the workhead independently.
- Center H-Frame turntable that sets on the rails to manually rotate the machine as needed.
- Easy accessibility to workhead components to perform routine maintenance.



Operator Touchscreen Control Panel for Workhead Adjustment and Diagnostic Troubleshooting



RELAMINC.COM

RELAM, Inc.  
7695 Bond Street  
Glenwillow, Ohio 44139  
800.962.2902  
quotes@relaminc.com



WISKTRUCKS.COM

Wiskerchen Truck & Equipment  
205331 Co Rd F  
Spencer, WI 54479  
888.405.0110  
info@wisktrucks.com

Rev 06-24