



Ultra Clipper Applicator / Remover

INNOVATIVE DESIGNS FROM RACINE RAILROAD PRODUCTS

RRP Design

The Ultra Clipper is a self-propelled gasoline engine-driven portable clip applicator and remover primarily used for maintenance operations.

- The Ultra Clipper can be used with a variety of workheads (sold separately) to accommodate many types of resilient fasteners.
- Change out can easily be done in the field.

One Machine for Two Jobs

- Simultaneously applies / retracts 2 clips on 1 rail.
- Workhead arms push the preset clip into the socket using steady pressure.
- Clips will not lose holding power due to stressful hammer blows.
- Lessens operator fatigue by using an outrigger wheel assembly for stability.
- A self-propelled motor eliminates the operator from pushing the machine on an incline.

Available Options

- Two wheel drive
- Work lights for night or tunnel projects



Versatile

- Applies / retracts clips on concrete, wood, or steel ties with no workhead change out.
- Easily change machine from apply to retract or from retract to apply by activating on hydraulic lever.
- Dual controls located on either end of the machine are standard for safe and easy operation.
- The Ultra Clipper can be used on 90 -141 lbs rail.



RELAMINC.COM

RELAM, Inc.
7695 Bond Street
Glenwillow, Ohio 44139
800.962.2902
quotes@relaminc.com



WISKTRUCKS.COM

Wiskerchen Truck & Equipment
205331 Co Rd F
Spencer, WI 54479
888.405.0110
info@wisktrucks.com

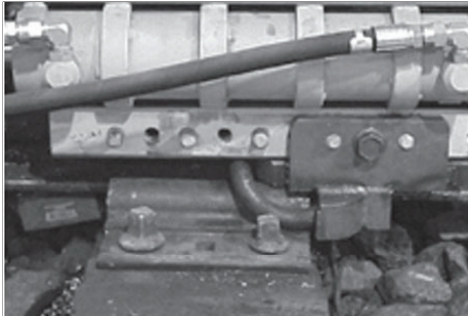


Ultra Clipper Applicator / Remover

INNOVATIVE DESIGNS FROM RACINE RAILROAD PRODUCTS

Specifications

- Dimensions: 57" L x 30.5' W (less outrigger) x 46" H (to lift point)
- Weight: 850 lbs
- Engine: GX270, 270cc with electric start
- Hydraulic Reservoir Capacity: 8 gallons
- Ability to work on 90 -141 lbs rail



UC E-Clipper Workhead

- Applies / removes Pandrol® e-series clips
- Remove and apply tools for wood or concrete easily changed with one bolt on either side of the workhead



UC F-Clipper Workhead

- Applies / removes Pandrol Fastclips®
- During removal, the clip is precisely positioned at the end of the socket in preparation for re-installation
- No more "flying clips"



UC S-Clipper Workhead

- Applies / removes Safelok® I, Shur-Lok® and Air Boss® clips
- During removal, the clip is precisely positioned at the end of the socket in preparation for re-installation
- No more "flying clips"

RELAM
RAILWAY EQUIPMENT LEASING AND MAINTENANCE

RELAMINC.COM

RELAM, Inc.
7695 Bond Street
Glenwillow, Ohio 44139
800.962.2902
quotes@relaminc.com

WISKERCHEN
TRUCK & EQUIPMENT LLC

WISKTRUCKS.COM

Wiskerchen Truck & Equipment
205331 Co Rd F
Spencer, WI 54479
888.405.0110
info@wisktrucks.com

Rev 06-24